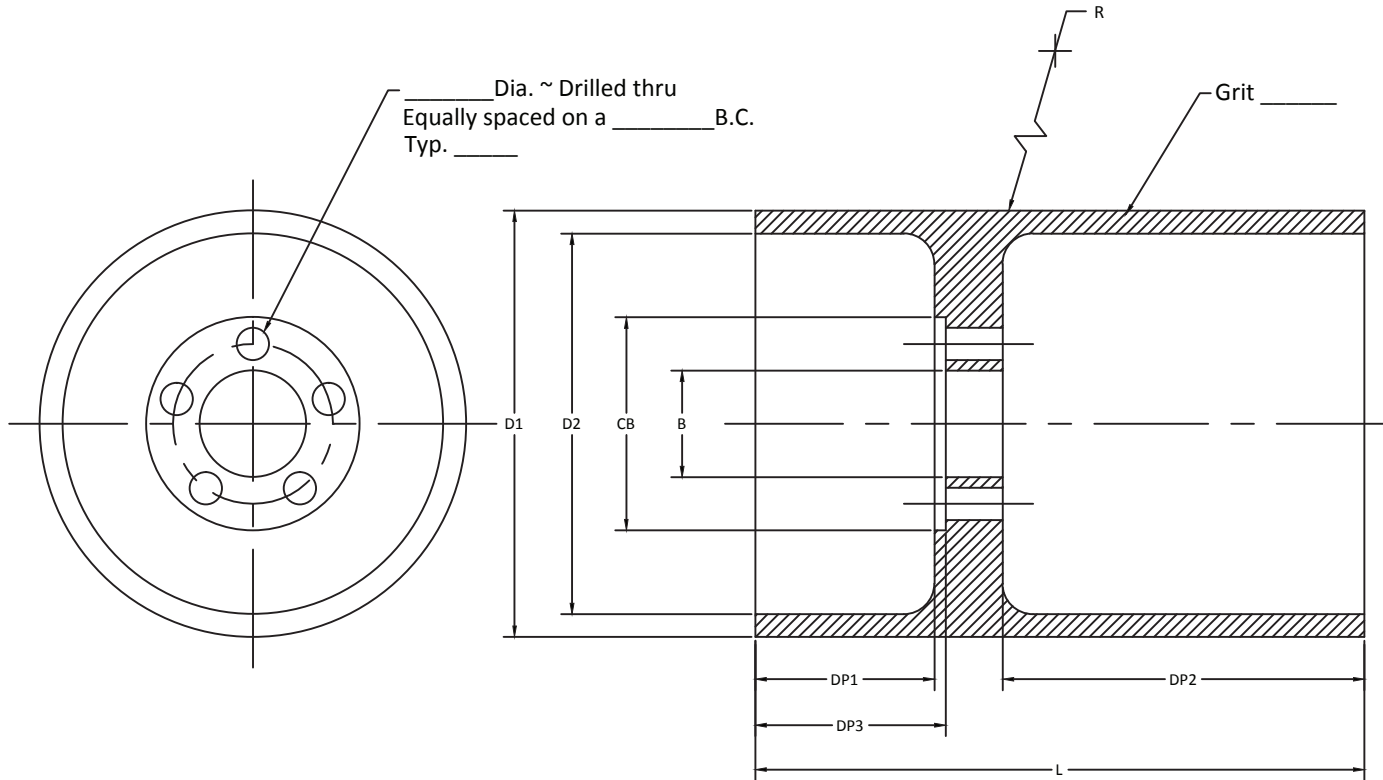


This drawing and the information contained herein is CONFIDENTIAL and PROPRIETARY to Friction Coating Corporation, is received in CONFIDENCE and shall not be used, copied, or disclosed to others without the written permission of Friction Coating Corporation. Doing so will result in legal action.

TUO Center Grind Drum

TUO Center Grind Drum Information



D1. Diameter: \_\_\_\_\_

D2. Diameter: \_\_\_\_\_

B. Bore (Finish grind size): \_\_\_\_\_

CB. Counterbore: \_\_\_\_\_

L. Length: \_\_\_\_\_

R. Radius: \_\_\_\_\_

DP1. Depth: \_\_\_\_\_

DP2. Depth: \_\_\_\_\_

DP3. Depth: \_\_\_\_\_

Special Instructions:

\_\_\_\_\_

\_\_\_\_\_

Company: \_\_\_\_\_

Address: \_\_\_\_\_

City, State, Zip: \_\_\_\_\_

Country: \_\_\_\_\_

Contact: \_\_\_\_\_

Phone: \_\_\_\_\_

Fax: \_\_\_\_\_

E-mail: \_\_\_\_\_

Quantity: \_\_\_\_\_

P.O.#: \_\_\_\_\_



44833 Centre Court  
Clinton Township, MI 48038 • USA  
P 586.731.0990 • F 586.731.0991

Order Form

STANDARD TOLERANCES  
UNLESS OTHERWISE NOTED:

0.0000 ±0.001  
0.000 ±0.005  
0.00 ±0.010

MATERIAL 1018

DATE

DRAWING NO.

REVISION

DRAWN BY

SHEET

A	INITIAL RELEASE	
SYM.	REVISION RECORD	DATE

\* Grit selection: Use our "Grit Chart" located on the grinding wheel page.